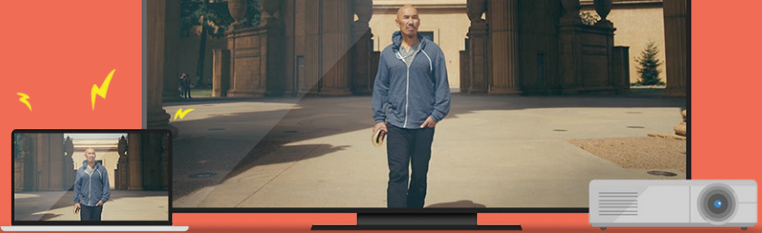


Cable Guide



Identify the Cable for Your Projector or TV

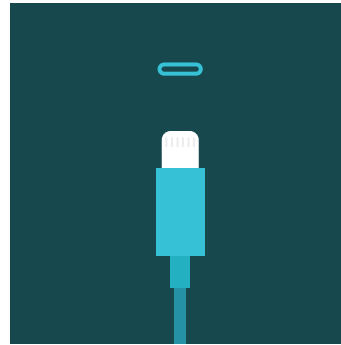
Identify the port on your projector or TV and get the appropriate cable.



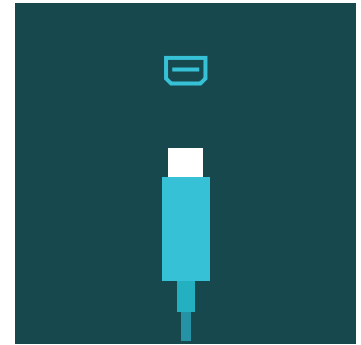
30-Pin
(Older Apple devices)



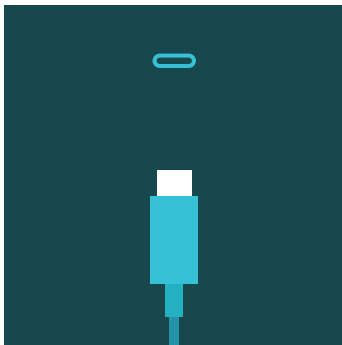
HDMI



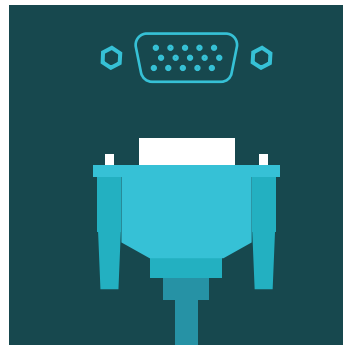
Lightning
(Apple devices)



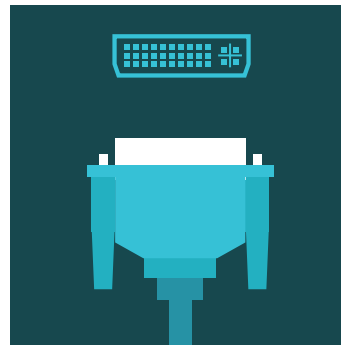
Thunderbolt/Mini Display Port



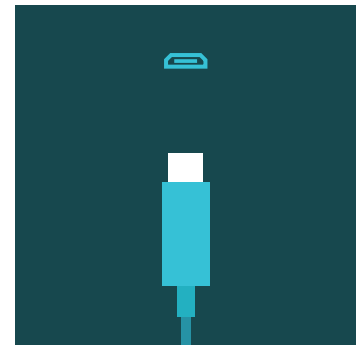
USB-C



VGA



DVI



Micro-USB

Adapters

If your computer doesn't share the same type of port as your cable, you'll need an adapter. Here are some commonly used adapters when connecting a computer to a projector or TV.

[USB-C to HDMI](#)

[USB-C to VGA](#)

[Lightning to HDMI](#)

[USB-C to DVI](#)

[Micro-USB to HDMI](#)

[Lightning to DVI](#)

[Apple Cable Adapters](#)